



St. Mary's Primary School Newsletter

43 O' Donnell Ave.
 (P.O. Box 320)
 Myrtleford Victoria 3737
 Phone: 03 5752 1808 Fax: 03 5752 2651 Mobile: 0487 772 234
 e-mail: principal@smyrtleford.catholic.edu.au
 web: www.smyrtleford.catholic.edu.au

Date: 17th October, 2024 Newsletter No: 15 Term: 4 - Week: 2

School Notices

Yard Supervision:

Morning: 8:30 - 8:55am
 Afternoon: 3:20 -3:35pm

Bell Times:

School Begins 8:55am
 Recess: 11:10–11:30am
 Lunch: 1:30 -2:20pm
 Finish: 3:20pm

Student Absences:

Please phone the office by 9:00am if your child will not be at school on 57 521808.
 Or mark absence on PAM.



Term 4

Monday 7th October
Wednesday 18th December Last day for Students
Friday 20th December Last day for Staff

MASS TIMES

Myrtleford

Saturday @ 6:00pm
 Sunday @ 9.00am

Bright

Sunday @ 11:00am

St Patricks Whorouly

Last Sunday of the Month @ 5:00pm



Click on the link

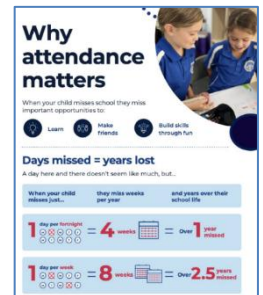
SIGNING YOUR CHILD IN & OUT & LATE TO SCHOOL PROCESS

All Children who arrive at school after 8:55am or leave school before 3:20pm MUST be signed in/out at the office. If for any reason, you need to take your child out of school during school hours, please come to the office to sign your child out.

STUDENT ABSENCES

If your child is absent from school for any reason, it is vital that you notify the school prior to 9am, giving the reason for the absence (e.g. If your child is sick, attending an appointment, family holiday etc). This can be done via a few ways:

- Mark absence on PAM.
- Send a note with your child on their return to school, or before if you know in advance
- School answering machine is on out of hours, so you can leave a message on 57521808



OCTOBER	
Thursday 17 th	Foundation 2025 Transition Morning 9:30 – 10:45am
Friday 18 th	Hume Region Athletics (qualifying students)
Thursday 24 th	Foundation 2025 Transition Morning 9:30 – 10:45am
Friday 25 th	Division Basketball (selected students)
Monday 28 th	Assembly 2:30pm EMPAC
Thursday 31 st	Foundation 2025 Transition Morning 9:30 – 10:45am
NOVEMBER	
Monday 4 th	Pupil Free Day (Teacher Report Writing Day)
Tuesday 5 th	Melbourne Cup Public Holiday
Wednesday 6 th	JLC Design and Technology Excursion Wangaratta
Thursday 7 th	MLC Camp Valley Homestead
Friday 8 th	MLC Camp Valley Homestead
Monday 11 th	Assembly 2:30pm EMPAC
Tuesday 19 th	Foundation Transition Morning 9 – 11am
Monday 25 th	Assembly EMPAC 2:30pm
Tuesday 26 th	Foundation Transition Morning 9 – 11am
Thursday 28 th	School Concert Performance EMPAC
DECEMBER	
Wednesday 4 th	Swimming Program Day 1
Thursday 5 th	Swimming Program Day 2
Friday 6 th	Swimming Program Day 3
Tuesday 10 th	State Wide Transition Day
Thursday 12 th	Whole School End of Year Mass 9:15am
Friday 13 th	JLC Bright Excursion
Monday 16 th	Assembly EMPAC 2:30pm
Tuesday 17 th	Year 6 Graduation Mass
Wednesday 18 th	Last Day of School for Students 3:20pm Finish
Thursday 19 th	Staff Planning Day
Friday 20 th	Staff Planning Day

Book Club Issue 7

Book Club catalogue orders need to be in by Friday 25th October.



St Mary's Primary is committed to students experiencing a sense of inclusion that is respectful of their giftedness, abilities, culture and contexts. Our student's experience learning and teaching in a child safe environment that is engaging and liberating.

ST MARY'S PARENTS & FRIENDS

MANGO FUNDRAISER



Fresh North Queensland Mangoes

Direct from the farm to you!

The Mango Fundraiser only use Bowen Special Mangoes which are more formally know as Kensington Pride Mangoes. They are packed in a single layer tray and will usually have between 12 and 20 mangoes with a total weight of approximately 7kg.

As well as having a great taste, Mangoes are packed with nutritional goodness – Vitamin C (one mango contains your recommended daily allowance), Vitamin E, Beta-Carotene, antioxidants, Potassium & B Vitamins. They are low in fat & cholesterol free.

When you buy Mangoes from the Mango Fundraiser you know the fruit is coming directly from the farm to you. Your mangoes aren't being held for long periods in storage or ripening rooms.

Cost per Tray:	\$27
Place your order by:	28 th October, 2024
Payment:	Cash or Eftpos facilities available
Further Information:	Contact St Mary's Primary School - 57 521 808
Delivery:	16 th December 2024
Pick Up:	St Mary's Office 43 O'Donnell Avenue Myrtleford

ALPINE
SHIRE COUNCIL

THE DREAMING SPACE
SUSTAINABLE ENVIRONMENTAL PRACTICES

Children's Week

Join us for a **FREE** live performance from The Dreaming Space to celebrate Children's Week 2024 in the Alpine Shire.

Mount Beauty | Hydro Park | Tuesday 22nd October
Myrtleford | Piazza | Wednesday 23rd October
Bright | Howitt Park | Thursday 24th October

**3.30 - 5.30pm Show at 4 | Food stalls onsite
BYO Chair and Picnic Rug**

VICTORIA State Government
Department of Education

CHILDREN'S WEEK

This Children's Week Event is aimed at children aged 0-10 and their families, all welcome.



Immunisation Session Dates 2024

MOUNT BEAUTY	MYRTLEFORD	BRIGHT
Lakeview Children's Centre Lakeside Avenue, Mount Beauty Wednesdays 9.30am to 10.30am	Myrtleford Senior Citizens Centre Smith Street, Myrtleford Thursdays 9.30am to 10.30am	Alpine View Children's Centre 23 Deacon Avenue, Bright Fridays 9.30am to 10.30am
24 January 2024 21 February 2024 27 March 2024 24 April 2024 29 May 2024 26 June 2024 24 July 2024 28 August 2024 25 September 2024 23 October 2024 27 November 2024 18 December 2024	25 January 2024 22 February 2024 28 March 2024 23 April 2024 (Tues) 30 May 2024 27 June 2024 25 July 2024 29 August 2024 26 September 2024 24 October 2024 28 November 2024 19 December 2024	23 January 2024 (Tues) 23 February 2024 26 March 2024 (Tues) 26 April 2024 31 May 2024 28 June 2024 26 July 2024 30 August 2024 24 Sept 2024 (Tues) 25 October 2024 29 November 2024 20 December 2024

Please book online at <https://portal.cirv.vic.gov.au>. Please bring your Medicare card and your child's health record book to the session for updating. We request that you remain at the centre for a 15 minute period after your child's vaccination.

Scan QR code to book



Ready to try something new?

Join Scouts

Every week, nearly half a million young people dive into exciting adventures, make lifelong friendships, and explore the great outdoors with Scouting!

Try Scouts today and **enjoy 3 weeks FREE** to see why the fun never stops. Whether it's camping, hiking, or tackling STEM challenges, there's always something thrilling happening.

Don't miss out, unlock your adventure today!

For more information or to join visit, scoutsvictoria.com.au | 1800 SCOUTS



Scouts VICTORIA



YOU ARE INVITED!
 1st Myrtleford's Haunted House and Halloween games

WHERE | MYRTLEFORD SCOUT CENTRE
 183 BUFFALO RIVER ROAD

WHAT | HAUNTED HOUSE AND HALLOWEEN GAMES

DATE | THURSDAY OCTOBER 31 **TIME |** 5PM - 7PM

COST | GOLD COIN DONATION



LEARN TO DRIVE AGE 5.

THERE'S GOLF FOR THAT.

The Myrtleford Golf Club - MyGolf Junior Program

Come and join us for the next MyGolf clinic. We have a session once a week that runs for 60mins. Lessons are conducted in small groups and focus on giving participants plenty of opportunities to explore skills and to build confidence to hit the golf course. The program is open to ages 5-17yrs.

Dates:

- 'Come & Try' Afternoon - Friday 1st November
- Term 4 MyGolf Program – Friday 1st November – Friday 13th December

Time: Friday 4.00pm – 5.00pm

Cost: \$65

Registration: Register through the QR code or find us at www.golf.org.au/mygolf

Enquiries: 0448 591 292



Scan to find
a program.



golf.org.au/mygolf



JUNIOR Challenge 2024

Friday 25th October -
Myrtleford Golf Club (4pm Start)



3 STAGE EVENT FOR BOYS & GIRLS AT CLUB,
LOCAL DISTRICT AND NORTH EAST DISTRICT
LEVELS WITH GREAT PRIZES AT EACH STAGE

3 AGE GROUPS - FOR JUNIORS
WITH OR WITHOUT HANDICAPS

Test your golfing skills against your friends and win a chance
to progress to the next stage.

Final stage in conjunction with Junior Championships 24th Nov.

Please contact MGC Junior Coordinator on 0448591292 for further details
or enter via the link - <https://forms.gle/vJBpLT26M5YRgUtF8>.